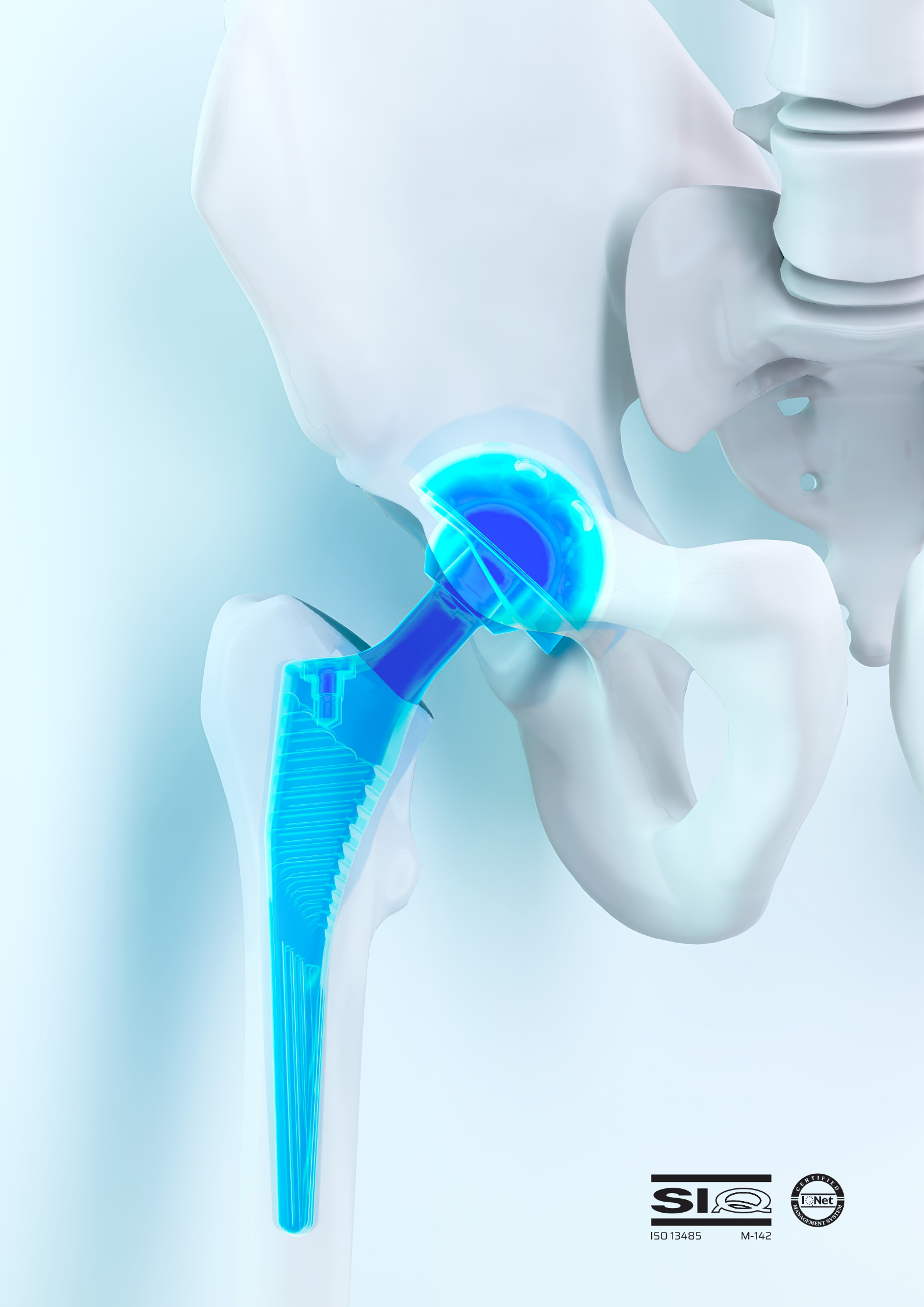




# Hip Endoprotheses



ISO 13485

M-142



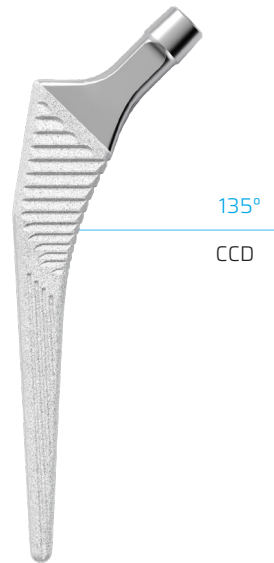
# Content

<b>1. Cementless hip endoprosthesis</b>	<b>4</b>
IN-Star stem	4
Zweymuller stem	5
Acetabular cups	
• Acetabular cup IN-15	6
• Acetabular cup with grooves and Ti coating	
• Acetabular cup with grooves and Ti+HA coating	
Acetabular screws	7
Modular femoral head	7
Acetabular inserts	8
<b>2. Cemented hip endoprosthesis</b>	<b>9</b>
Muller stem standard	9
Highly polished Muller stem	9
Acetabulum Muller	9
<b>3. Total hip endoprosthesis</b>	<b>10</b>
Modular femoral head	10
<b>4. Partial hip endoprosthesis</b>	<b>11</b>
Partial femoral head	11
<b>5. Instrument sets</b>	<b>12</b>
IN-Star instrument set	12
Zweymuller instrument set	14
Muller instrument set	16
Acetabular instrument set	18

# CEMENTLESS HIP ENDOPROSTHESIS

# IN-Star stem ISO 5832-3

## Standard



Size	REF
8	2 2 . 1 3 5 T 0 8
9	2 2 . 1 3 5 T 0 9
10	2 2 . 1 3 5 T 1 0
11	2 2 . 1 3 5 T 1 1
12	2 2 . 1 3 5 T 1 2
13	2 2 . 1 3 5 T 1 3
14	2 2 . 1 3 5 T 1 4
15	2 2 . 1 3 5 T 1 5
16	2 2 . 1 3 5 T 1 6
18	2 2 . 1 3 5 T 1 8

## High Offset



Size	REF
9	2 2 . 2 3 5 T 0 9
10	2 2 . 2 3 5 T 1 0
11	2 2 . 2 3 5 T 1 1
12	2 2 . 2 3 5 T 1 2
13	2 2 . 2 3 5 T 1 3
14	2 2 . 2 3 5 T 1 4
15	2 2 . 2 3 5 T 1 5
16	2 2 . 2 3 5 T 1 6
18	2 2 . 2 3 5 T 1 8

## Coxa Vara, collared



Size	REF
9	2 2 . 1 2 5 T 0 9
10	2 2 . 1 2 5 T 1 0
11	2 2 . 1 2 5 T 1 1
12	2 2 . 1 2 5 T 1 2
13	2 2 . 1 2 5 T 1 3
14	2 2 . 1 2 5 T 1 4
15	2 2 . 1 2 5 T 1 5
16	2 2 . 1 2 5 T 1 6
18	2 2 . 1 2 5 T 1 8

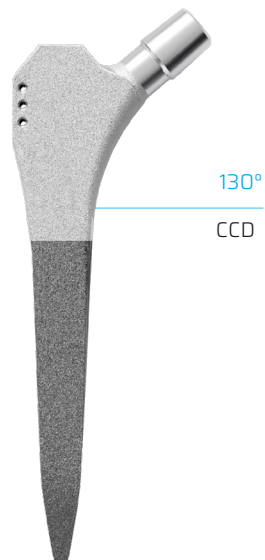


Standard



Size	REF	Size	REF
130	22.850T130	165	22.850T165
135	22.850T135	170	22.850T170
140	22.850T140	175	22.850T175
145	22.850T145	180	22.850T180
150	22.850T150	185	22.850T185
155	22.850T155	190	22.850T190
160	22.850T160		

Standard  
with HA coating



Size	REF	Size	REF
130	22.852T130	165	22.852T165
135	22.852T135	170	22.852T170
140	22.852T140	175	22.852T175
145	22.852T145	180	22.852T180
150	22.852T150	185	22.852T185
155	22.852T155	190	22.852T190
160	22.852T160		

Lateral



Size	REF	Size	REF
130	22.860T130	165	22.860T165
135	22.860T135	170	22.860T170
140	22.860T140	175	22.860T175
145	22.860T145	180	22.860T180
150	22.860T150	185	22.860T185
155	22.860T155	190	22.860T190
160	22.860T160		

IN-15



Size	REF
A46	22.457T046
A48	22.457T048
B50	22.457T050
B52	22.457T052
C54	22.457T054
C56	22.457T056
D58	22.457T058
D60	22.457T060
D62	22.457T062
E64	22.457T064

With grooves  
and Ti coating



Size	REF
A46	22.451T046
A48	22.451T048
B50	22.451T050
B52	22.451T052
C54	22.451T054
C56	22.451T056
D58	22.451T058
D60	22.451T060
D62	22.451T062
E64	22.451T064

With grooves  
and Ti+HA coating



Size	REF
A46	22.455T046
A48	22.455T048
B50	22.455T050
B52	22.455T052
C54	22.455T054
C56	22.455T056
D58	22.455T058
D60	22.455T060
D62	22.455T062
E64	22.455T064



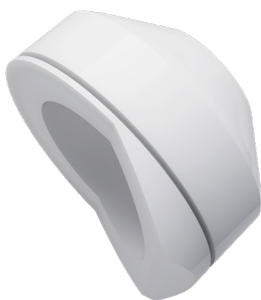
Size	REF
15	8 6 . 9 0 0 T 1 5
20	8 6 . 9 0 0 T 2 0
25	8 6 . 9 0 0 T 2 5
30	8 6 . 9 0 0 T 3 0
35	8 6 . 9 0 0 T 3 5
40	8 6 . 9 0 0 T 4 0
45	8 6 . 9 0 0 T 4 5
50	8 6 . 9 0 0 T 5 0
55	8 6 . 9 0 0 T 5 5
60	8 6 . 9 0 0 T 6 0
65	8 6 . 9 0 0 T 6 5
70	8 6 . 9 0 0 T 7 0
75	8 6 . 9 0 0 T 7 5
80	8 6 . 9 0 0 T 8 0
85	8 6 . 9 0 0 T 8 5
90	8 6 . 9 0 0 T 9 0
95	8 6 . 9 0 0 T 9 5

Neutral insert



UHMWPE			XLPE		
Size	ø28	ø32	Size	ø28	ø32
A	22.399-01	-	A	22.420-01	-
B	22.399-02	22.395-02	B	22.420-02	22.422-02
C	22.399-03	22.395-03	C	22.420-03	22.422-03
D	22.399-04	22.395-04	D	22.420-04	22.422-04
E	22.399-05	22.395-05	E	22.420-05	22.422-05

Angled insert



UHMWPE			XLPE		
Size	ø28	ø32	Size	ø28	ø32
A	22.400-01	-	A	22.421-01	-
B	22.400-02	22.396-02	B	22.421-02	22.423-02
C	22.400-03	22.396-03	C	22.421-03	22.423-03
D	22.400-04	22.396-04	D	22.421-04	22.423-04
E	22.400-05	22.396-05	E	22.421-05	22.423-05

# CEMENTED HIP ENDOPROSTHESIS

## Muller stem ISO 5832-4

Standard



Size	REF
7.5	2 2 8 0 0 0 7 . 5
8.75	2 2 8 0 0 0 8 . 7
10.0	2 2 8 0 0 1 0 . 0
11.5	2 2 8 0 0 1 1 . 5
12.5	2 2 8 0 0 1 2 . 5
13.5	2 2 8 0 0 1 3 . 5
15.0	2 2 8 0 0 1 5 . 0
17.5	2 2 8 0 0 1 7 . 5
20.0	2 2 8 0 0 2 0 . 0

Highly polished



Size	REF
7.5	2 2 8 1 0 0 7 . 5
8.75	2 2 8 1 0 0 8 . 7
10.0	2 2 8 1 0 1 0 . 0
11.5	2 2 8 1 0 1 1 . 5
12.5	2 2 8 1 0 1 2 . 5
13.5	2 2 8 1 0 1 3 . 5
15.0	2 2 8 1 0 1 5 . 0
17.5	2 2 8 1 0 1 7 . 5
20.0	2 2 8 1 0 2 0 . 0



## Acetabulum Muller ISO 5834-2

Size	ø28	ø32
ø44	2 2 . 3 8 3 - 4 4	2 2 . 3 8 0 - 4 4
ø46	2 2 . 3 8 3 - 4 6	2 2 . 3 8 0 - 4 6
ø48	2 2 . 3 8 3 - 4 8	2 2 . 3 8 0 - 4 8
ø50	2 2 . 3 8 3 - 5 0	2 2 . 3 8 0 - 5 0
ø52	2 2 . 3 8 3 - 5 2	2 2 . 3 8 0 - 5 2

Size	ø28	ø32
ø54	2 2 . 3 8 3 - 5 4	2 2 . 3 8 0 - 5 4
ø56	2 2 . 3 8 3 - 5 6	2 2 . 3 8 0 - 5 6
ø58	2 2 . 3 8 3 - 5 8	2 2 . 3 8 0 - 5 8
ø60	2 2 . 3 8 3 - 6 0	2 2 . 3 8 0 - 6 0
ø62	2 2 . 3 8 3 - 6 2	-



# TOTAL HIP ENDOPROSTHESIS

## Modular femoral head ISO 5832-12



Size	ø28	ø32
S	22.387-28	22.364-03
M	22.388-28	22.364-02
L	22.389-28	22.364-01
XL	22.390-28	22.364-04
XXL	22.391-28	22.364-05

\*compatible with cementless and cemented stems



# PARTIAL HIP ENDOPROSTHESIS

## Partial femoral head ISO 5832-9

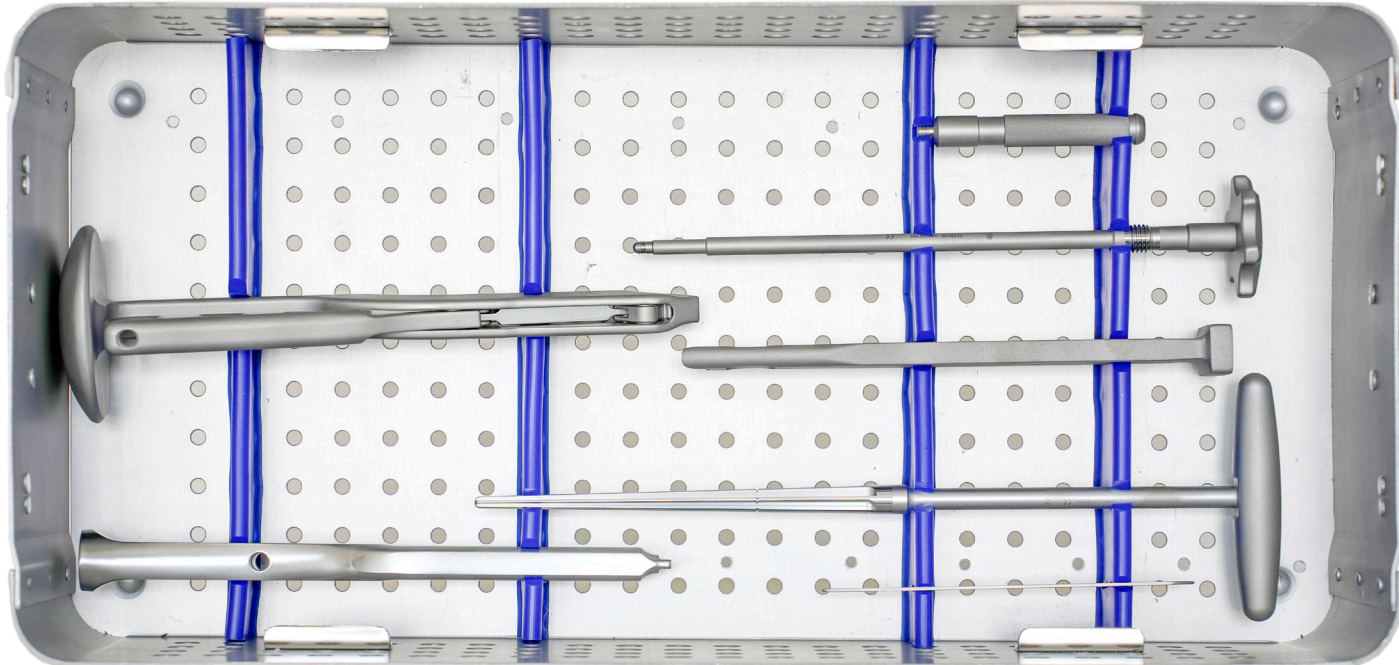
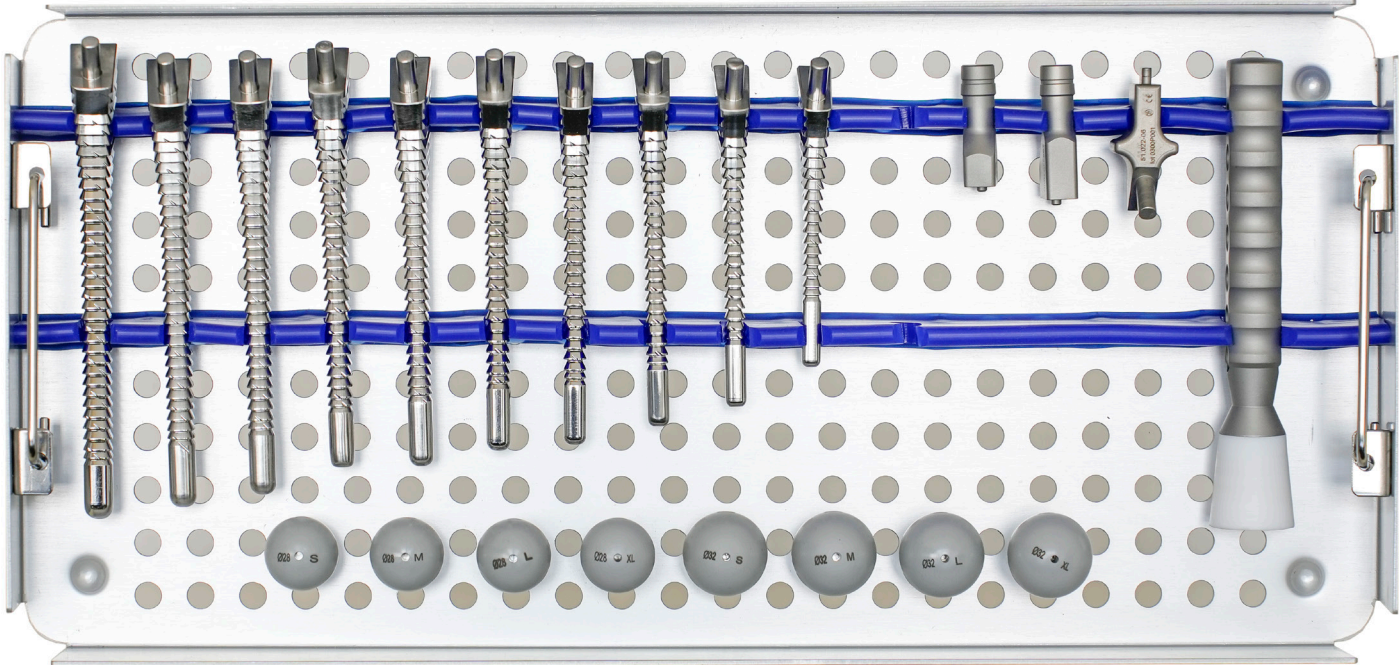


Size	ø28	Size	ø28
ø38	22.368M38	ø48	22.368M48
ø39	22.368M39	ø49	22.368M49
ø40	22.368M40	ø50	22.368M50
ø41	22.368M41	ø51	22.368M51
ø42	22.368M42	ø52	22.368M52
ø43	22.368M43	ø53	22.368M53
ø44	22.368M44	ø54	22.368M54
ø45	22.368M45	ø55	22.368M55
ø46	22.368M46	ø56	22.368M56
ø47	22.368M47	ø57	22.368M57
		ø58	22.368M58

\*compatible with cementless and cemented stems



# IN-STAR INSTRUMENT SET

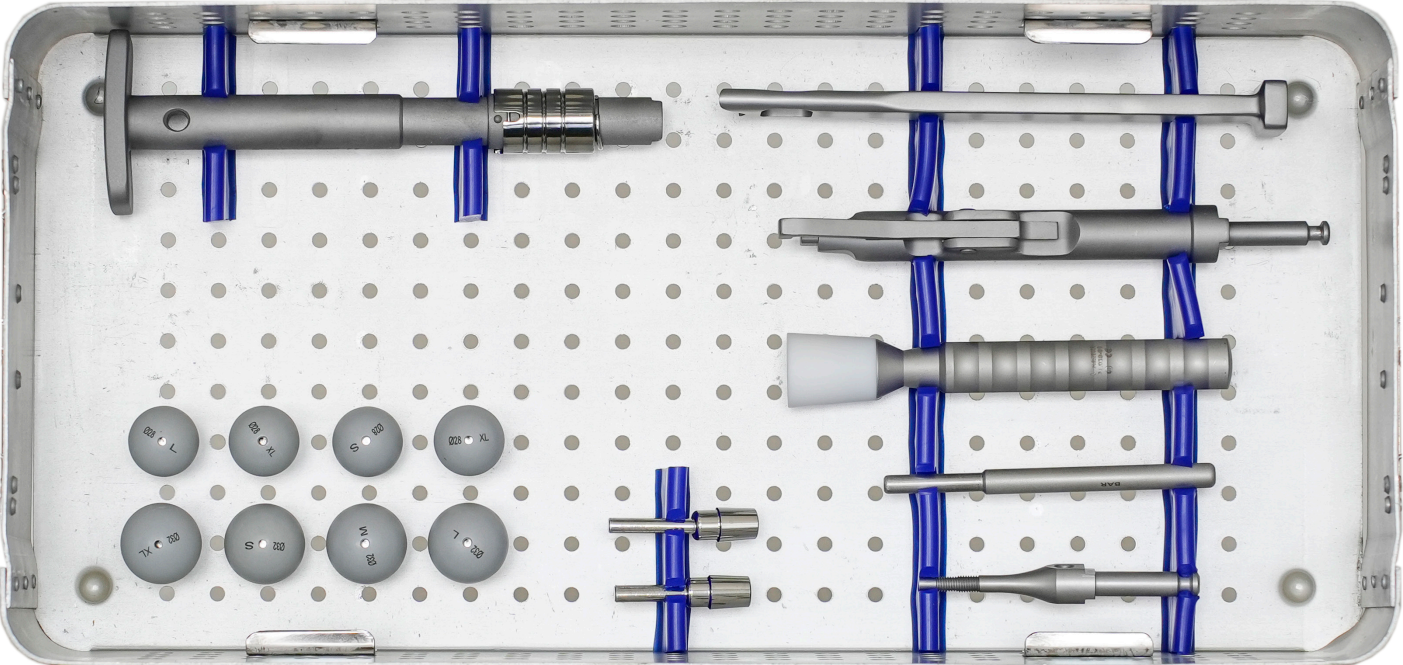
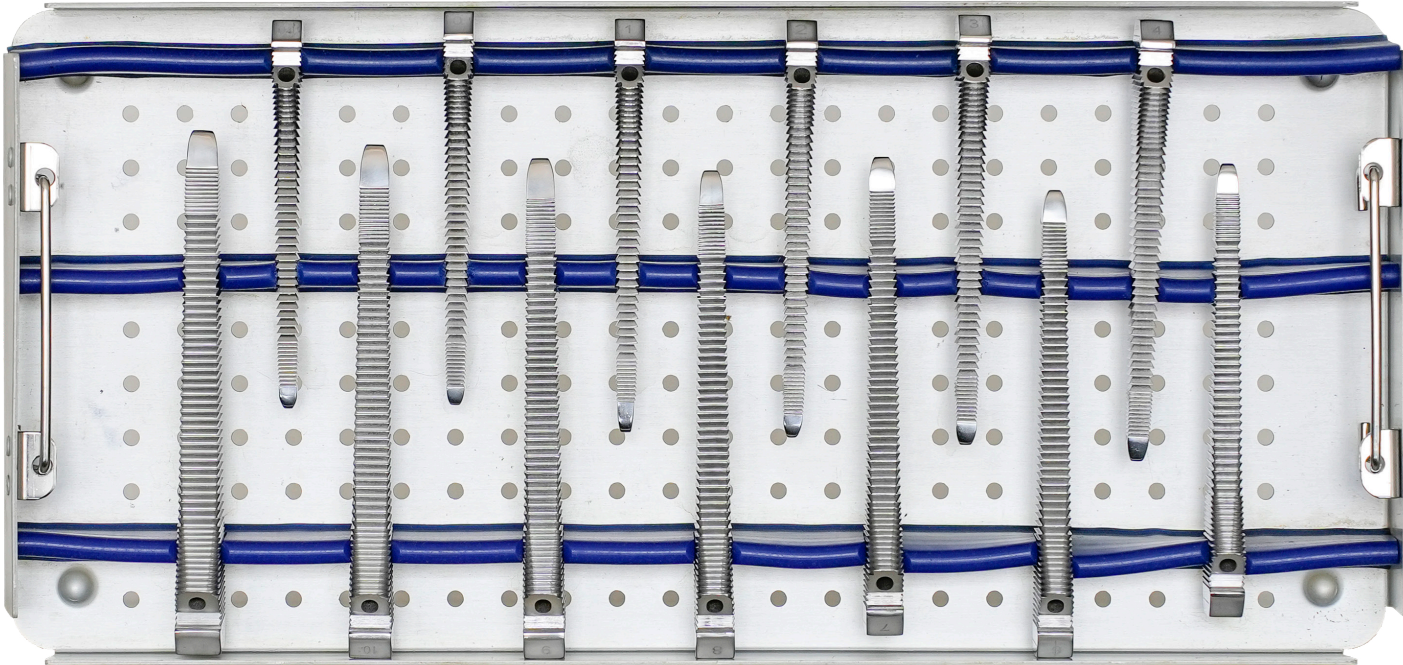


No.	Product name	REF
1	Stem positioner	5 1 . 0 2 2 - 0 2
2	Broach handle - straight	1 3 . 1 0 3 - 0 1
3	*Broach handle - curved	1 3 . 1 0 3 - 0 2
4	Anteversio grip	7 4 . 0 1 1 - 0 1
5	Stem positioner inner shaft	5 1 . 0 2 2 - 0 3
6	Box chisel	1 2 . 2 1 0 - 0 1
7	Tapered pin reamer	6 5 . 1 3 6 - 0 1
8	Osteotomy guide	8 8 . 0 2 2 - 1 0
9	IN-Star Broach , size 8	6 5 . 1 3 5 - 0 8
10	IN-Star Broach , size 9	6 5 . 1 3 5 - 0 9
11	IN-Star Broach , size 10	6 5 . 1 3 5 - 1 0
12	IN-Star Broach , size 11	6 5 . 1 3 5 - 1 1
13	IN-Star Broach , size 12	6 5 . 1 3 5 - 1 2
14	IN-Star Broach , size 13	6 5 . 1 3 5 - 1 3
15	IN-Star Broach , size 14	6 5 . 1 3 5 - 1 4
16	IN-Star Broach , size 15	6 5 . 1 3 5 - 1 5
17	IN-Star Broach , size 16	6 5 . 1 3 5 - 1 6
18	IN-Star Broach , size 18	6 5 . 1 3 5 - 1 8
19	Trial Neck Standard	2 2 . 0 5 1 - 0 1
20	Trial Neck High Offset	2 2 . 0 5 1 - 0 2
21	Trial Neck Coxa Vara	2 2 . 0 5 1 - 0 3
22	Trial Head 28 S	2 2 . 1 1 0 - 0 1
23	Trial Head 28 M	2 2 . 1 1 0 - 0 2
24	Trial Head 28 L	2 2 . 1 1 0 - 0 3
25	Trial Head 28 XL	2 2 . 1 1 0 - 0 4
26	Trial Head 32 S	2 2 . 1 1 1 - 0 1
27	Trial Head 32 M	2 2 . 1 1 1 - 0 2
28	Trial Head 32 L	2 2 . 1 1 1 - 0 3
29	Trial Head 32 XL	2 2 . 1 1 1 - 0 4
30	Head Impactor	5 1 . 0 3 0 - 0 1
31	Calcar reamer	6 5 . 1 3 6 - 0 2
32	Stem impactor IN-Star	5 1 . 0 2 2 - 0 6

\* Curved broach handle is not part of standard instrument set. Available on request.



# ZWEYMULLER INSTRUMENT SET

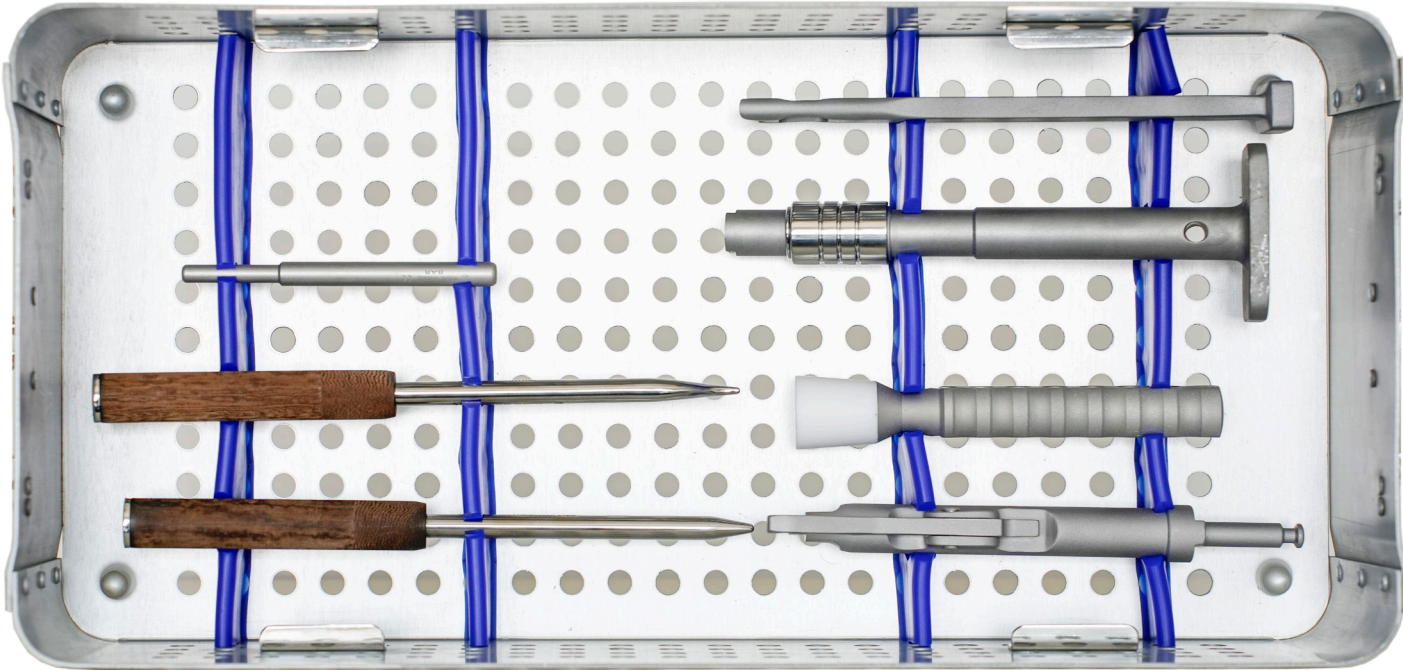
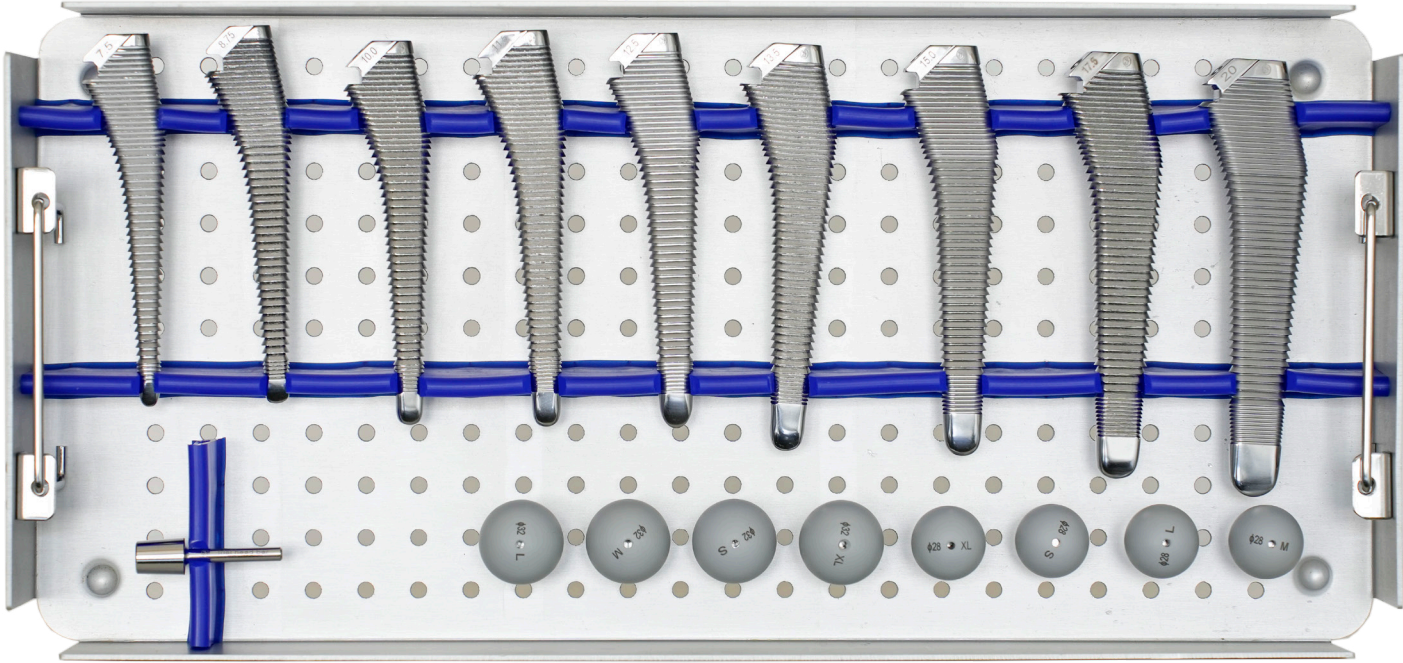




## 63.022-03

No.	Product name	REF
1	Box Chisel	1 2 . 2 1 0 - 0 1
2	Rasp Adaptor	1 3 . 1 0 0 - 0 1
3	Trial Neck	2 2 . 0 5 0 - 0 1
4	Modular Trial Head ø28 (-4)-S	2 2 . 1 0 0 - 0 1
5	Modular Trial Head ø28 (0)-M	2 2 . 1 0 0 - 0 2
6	Modular Trial Head ø28 (+4)-L	2 2 . 1 0 0 - 0 3
7	Modular Trial Head ø28 (+8)-XL	2 2 . 1 0 0 - 0 4
8	Modular Trial Head ø32 (-4)-S	2 2 . 1 0 1 - 0 1
9	Modular Trial Head ø32 (0)-M	2 2 . 1 0 1 - 0 2
10	Modular Trial Head ø32 (+4)-L	2 2 . 1 0 1 - 0 3
11	Modular Trial Head ø32 (+8)-XL	2 2 . 1 0 1 - 0 4
12	Impactor Extractor M7	3 3 . 2 0 0 - 0 1
13	Impactor Extractor Adaptor	9 1 . 2 0 0 - 0 1
14	Head Impactor	5 1 . 0 3 0 - 0 1
15	Rasp Zweymüller - stem 130	6 5 . 1 0 0 - 1 3 0
16	Rasp Zweymüller - stem 135	6 5 . 1 0 0 - 1 3 5
17	Rasp Zweymüller - stem 140	6 5 . 1 0 0 - 0 1
18	Rasp Zweymüller - stem 145	6 5 . 1 0 0 - 0 2
19	Rasp Zweymüller - stem 150	6 5 . 1 0 0 - 0 3
20	Rasp Zweymüller - stem 155	6 5 . 1 0 0 - 0 4
21	Rasp Zweymüller - stem 160	6 5 . 1 0 0 - 0 5
22	Rasp Zweymüller - stem 165	6 5 . 1 0 0 - 0 6
23	Rasp Zweymüller - stem 170	6 5 . 1 0 0 - 0 7
24	Rasp Zweymüller - stem 175	6 5 . 1 0 0 - 0 8
25	Rasp Zweymüller - stem 180	6 5 . 1 0 0 - 0 9
26	Rasp Zweymüller - stem 185	6 5 . 1 0 0 - 1 0
27	Rasp Zweymüller - stem 190	6 5 . 1 0 0 - 1 1
28	Handle	7 4 . 0 1 0 - 0 1

# MULLER INSTRUMENT SET



# 63.022-02

No.	Product name	REF
1	Box Chisel	1 2 . 2 1 0 - 0 1
2	Rasp Adaptor	1 3 . 1 0 0 - 0 1
3	Trial Neck	2 2 . 0 5 0 - 0 1
4	Modular Trial Head ø28 (-4)-S	2 2 . 1 0 0 - 0 1
5	Modular Trial Head ø28 (0)-M	2 2 . 1 0 0 - 0 2
6	Modular Trial Head ø28 (+4)-L	2 2 . 1 0 0 - 0 3
7	Modular Trial Head ø28 (+8)-XL	2 2 . 1 0 0 - 0 4
8	Modular Trial Head ø32 (-4)-S	2 2 . 1 0 1 - 0 1
9	Modular Trial Head ø32 (0)-M	2 2 . 1 0 1 - 0 2
10	Modular Trial Head ø32 (+4)-L	2 2 . 1 0 1 - 0 3
11	Modular Trial Head ø32 (+8)-XL	2 2 . 1 0 1 - 0 4
12	Impactor Extractor Adaptor	5 1 . 2 0 0 - 0 1
13	Head Impactor	5 1 . 0 3 0 - 0 1
14	Stem Muller Impactor	5 1 . 2 0 2 - 0 1
15	Stem Muller Extractor	5 1 . 2 0 3 - 0 1
16	Rasp Muller - stem 7.5	6 5 . 1 0 1 - 0 7 5
17	Rasp Muller - stem 8.75	6 5 . 1 0 1 - 0 8 7
18	Rasp Muller - stem 10	6 5 . 1 0 1 - 1 0 0
19	Rasp Muller - stem 11.5	6 5 . 1 0 1 - 1 1 5
20	Rasp Muller - stem 12.5	6 5 . 1 0 1 - 1 2 5
21	Rasp Muller - stem 13.5	6 5 . 1 0 1 - 1 3 5
22	Rasp Muller - stem 15	6 5 . 1 0 1 - 1 5 0
23	Rasp Muller - stem 17.5	6 5 . 1 0 1 - 1 7 5
24	Rasp Muller - stem 20	6 5 . 1 0 1 - 2 0 0
25	Handle	7 4 . 0 1 0 - 0 1





## 63.022-04

No.	Product name	REF
1	Harris AO joint	13 . 0 2 3 - 0 2
2	T-handle for reamer holder	13 . 1 0 2 - 0 1
3	Reamer holder	13 . 1 0 2 - 0 2
4	Flanged head ø28	22 . 1 0 2 - 2 8
5	Flanged head ø32	22 . 1 0 2 - 3 2
6	Trial acetabulum ø44	22 . 1 0 2 - 4 4
7	Trial acetabulum ø46	22 . 1 0 2 - 4 6
8	Trial acetabulum ø48	22 . 1 0 2 - 4 8
9	Trial acetabulum ø50	22 . 1 0 2 - 5 0
10	Trial acetabulum ø52	22 . 1 0 2 - 5 2
11	Trial acetabulum ø54	22 . 1 0 2 - 5 4
12	Trial acetabulum ø56	22 . 1 0 2 - 5 6
13	Trial acetabulum ø58	22 . 1 0 2 - 5 8
14	Trial acetabulum ø60	22 . 1 0 2 - 6 0
15	Trial acetabulum ø62	22 . 1 0 2 - 6 2
16	Trial acetabulum ø64	22 . 1 0 2 - 6 4
17	Spherical head ø28	22 . 1 0 3 - 2 8
18	Spherical head ø32	22 . 1 0 3 - 3 2
19	Screw forceps	25 . 1 9 0 - 0 1
20	AO joint flexible drill holder	33 . 0 2 2 - 0 4 2
21	Joint screwdriver SW3.5	33 . 3 3 0 - 3 5
22	Depth measuring gauge, curved	50 . 0 2 2 - 1 5
23	Depth measuring gauge, large	50 . 3 0 0 - 0 1
24	Acetabular cup impactor	51 . 0 2 2 - 0 4 2
25	Reamer head ø44	65 . 1 0 3 - 4 4
26	Reamer head ø46	65 . 1 0 3 - 4 6
27	Reamer head ø48	65 . 1 0 3 - 4 8
28	Reamer head ø50	65 . 1 0 3 - 5 0
29	Reamer head ø52	65 . 1 0 3 - 5 2
30	Reamer head ø54	65 . 1 0 3 - 5 4
31	Reamer head ø56	65 . 1 0 3 - 5 6
32	Reamer head ø58	65 . 1 0 3 - 5 8
33	Reamer head ø60	65 . 1 0 3 - 6 0
34	Reamer head ø62	65 . 1 0 3 - 6 2
35	Reamer head ø64	65 . 1 0 3 - 6 4
36	Drill ø4 for acetabular screw	71 . 0 2 2 - 0 4 2
37	Sleeve ø4	88 . 0 2 2 - 0 4



Restoring quality of life  
since 1896



instrumentaria

1896

**Instrumentaria d.d.**

Rimski put 31, 10360 Sesvete/Zagreb, Croatia

phone. +385 (0)1 5550 511

instrumentaria@instrumentaria.hr

[WWW.INSTRUMENTARIA.HR](http://WWW.INSTRUMENTARIA.HR)